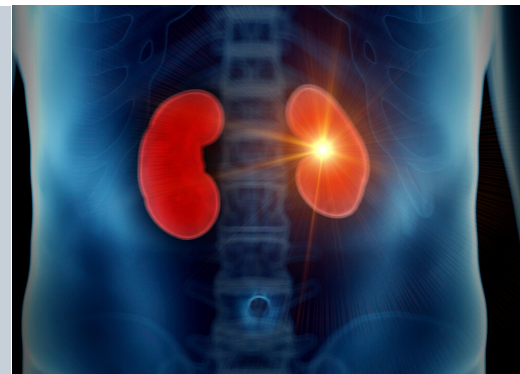


Acute Kidney Injury: a national strategy meeting

12 May 2020

Hosted by a national collaboration of The Renal Association, British Renal Society, and the Renal Getting It Right First Time team of NHS Improvement

Acute Kidney Injury (AKI) is associated with up to 1 in 7 secondary care admissions and is a major risk factor for multiple adverse outcomes, including a high risk of death within 30-days and long-term chronic kidney disease in those who survive. Ensuring that services and systems are supported to provide high-quality care for AKI is therefore an absolute priority for patients and for healthcare providers. AKI can affect patients in all clinical areas, from primary care through to specialist secondary care, and many groups of healthcare professionals are involved in the care of patients with AKI.



The aim of this meeting is to build on important recent work, such as the Think Kidneys AKI Initiative, high profile QI projects, and the development of local and regional models, and establish the priorities for a national special interest group for AKI

Who should attend?

Clinicians, commissioners, patient leaders, industry partners, and all involved in the care of patients with Acute Kidney Injury

At this meeting we will:

- Discuss the burden of AKI in all care sectors
- Focus on current models of care
- Outline variations in care
- Overview recent Quality Improvement programmes in AKI

Parallel workshops to include:

- Communication, education, and resource
- Data, case finding, artificial intelligence
- Quality Improvement and research and development
- Service specifications and standards

The outputs of the meeting will be captured and used to inform the work of health care professionals working in AKI in the UK.

Venue

Newton Building, Nottingham Trent University

Tickets

£50

RA/BRS/RCP/RCGP/Society of Acute Medicine members

£100

Non-members

Patients may register for free admission

Book now

www.renal.org/event/akimeeting